



THOMAS GOODWIN

FALL WINTER 2026



# *the muse*

Thomas Goodwin Fall Winter 2026

## **The muse**

tells of tension – the moment just before entry, where rhythm is not counted, but felt. Inspired by staccato and dark minor chords, the FW26 collection embodies interruption and density.

*Discipline in the cut. Freedom in movement.*

*Strict silhouettes – fluid transitions.*

*Precision as a foundation. Improvisation as an attitude.*





## Split Suit

Blazer \_\_\_\_\_ 7934-3-5410001-720  
Trousers \_\_\_\_\_ 3938-2-5410001-720



W 26  
F 20





## Coat

Coat \_\_\_\_\_ *5970-15-5956-770*





# *the split suit*

Blazer \_\_\_\_\_ 7944-18-5005-740  
Trousers \_\_\_\_\_ 3939-8-5005-740







**Coat**

Coat \_\_\_\_\_ 5270-0-1792-790





## Suit

Blazer \_\_\_\_\_ *7944-1-5950-790*

Trousers \_\_\_\_\_ *3939-9-5950-790*





THOMAS GOODWIN

# THOMAS GOO





## Split Suit

Blazer \_\_\_\_\_ *7837-1-5954-60*  
Trousers \_\_\_\_\_ *3933-2-5954-60*



## Split Suit

Blazer \_\_\_\_\_ *6745-0-5954-90*



## Split Suit

Blazer \_\_\_\_\_ *7837-1-5960-420*

## Split Suit

Blazer \_\_\_\_\_ 7837-7-5952-460







## Split Suit & Coat

Coat \_\_\_\_\_ 5970-3-5258-770

Blazer \_\_\_\_\_ 7934-3-5951-770

Trousers \_\_\_\_\_ 3938-2-5951-770

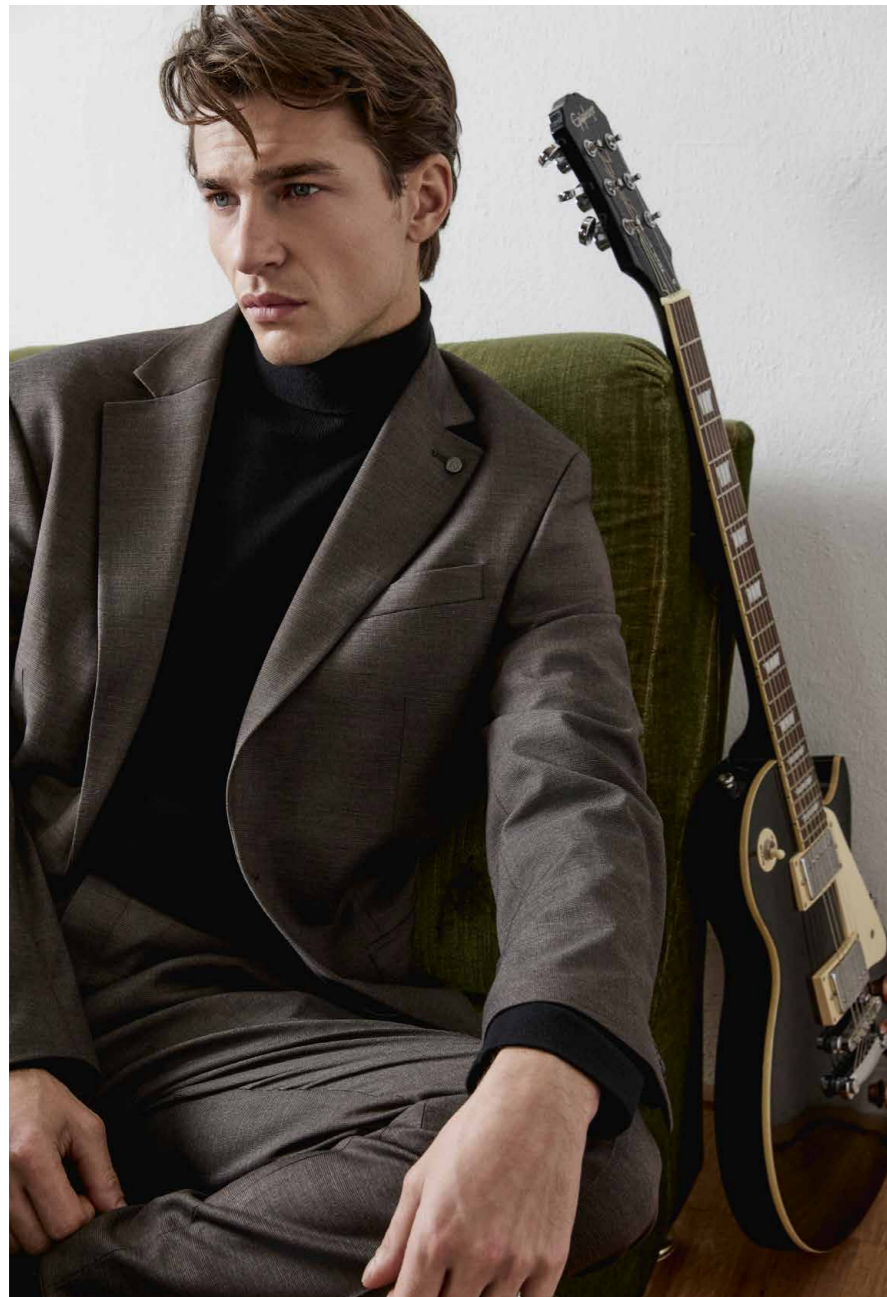


*the*



*split suit*

Blazer \_\_\_\_\_ 7944-18-6124-270  
Trousers \_\_\_\_\_ 3939-8-6124-270



## Split Suit & Coat

Blazer \_\_\_\_\_ 7934-3-5951-460  
Trousers \_\_\_\_\_ 3938-2-5951-460  
Coat \_\_\_\_\_ 5970-3-5312-460





## Suit

Blazer \_\_\_\_\_ 7934-3-5955-370

Trousers \_\_\_\_\_ 3938-10-5955-370







[www.thomasgoodwin.eu](http://www.thomasgoodwin.eu)  
Kaiser Bekleidungs GmbH  
Am Hundsrück 4  
63924 Kleinheubach  
Germany

