



LINDENMANN

SINCE 1961

NOS 2025





Karl Lindenmann

Gründer von LINDENMANN in den frühen 1960 Jahren  
founder of LINDENMANN in the early 1960s

## Seit Generationen unsere Leidenschaft: feinste Ledergürtel und Accessoires

Karl Lindenmann gründete LINDENMANN 1961 in Pforzheim zusammen mit seinem Sohn Karl Heinz, um sich voll und ganz der Produktion von Ledergürteln und Accessoires zu widmen; eine auf seiner Liebe für das Naturprodukt Leder basierende, visionäre Entscheidung und der Ursprung eines traditionsreichen Familien-Unternehmens, das genau eines im Sinn hat: exzellente Ledergürtel höchster Qualität, hergestellt mit Liebe und Leidenschaft von unseren qualifizierten und erfahrenen Spezialisten mit dem Wissen und der Erfahrung von Generationen.

## Our passion for generations: finest leather belts and accessories

Karl Lindenmann founded LINDENMANN in Pforzheim in 1961 together with his son Karl Heinz in order to devote himself entirely to the production of leather belts and accessories; a visionary decision based on his love of leather as a natural product and the origin of a traditional family business, which has exactly one thing in mind: excellent leather belts of the highest quality, made with love and passion by our skilled and experienced specialists with the knowledge and experience of generations.

# LINDENMANN

SINCE 1961

3

Die Verbindung traditioneller Handwerkskunst  
mit modernsten Produktionstechnologien  
The combination of traditional craftsmanship with  
state-of-the-art production technologies



Links im Bild: Firmensitz in Pforzheim  
in der Luisenstrasse, 1961

Left in the picture: company headquarters  
in Luisenstrasse in Pforzheim, 1961



Karl Heinz Lindenmann  
Firmenmitgründer  
co-founder



Klaus und Volker Lindenmann  
Inhaber und Geschäftsführer  
owners and CEOs

## INHALT

### LEDERGÜRTEL - LEATHER BELTS

**CASUAL** 05 - 22

**CLASSIC** 23 - 55

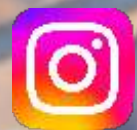
**SMART** 56 - 73

### LEDERTASCHEN - LEATHER BAGS

74 - 77

### LEDERBÖRSEN - LEATHER WALLETS

78 - 86



Instagram  
lindenmann1961

FASHION CLOUD



www.lindenmann.com  
www.lindenmann.es

LINDENMANN

SINCE 1961

5

CASUAL





**11 anthrazit / anthracite**

1000465

P 153

40 mm

85 - 120 cm

Vollrindleder

Full grain leather



**26 taupe / taupe**



**40 marine / navy**



**23 dunkelbraun / darkbrown**



1000485  
P 154  
40 mm  
85 - 120 cm  
Vollrindleder  
NUBUK  
Full grain leather  
nubuk

**10 schwarz / black**



**23 dunkelbraun / darkbrown**



**26 taupe / taupe**

# LINDENMANN

SINCE 1961

1000431

P 154

40 mm

85 - 120 cm

Vollrindleder

Full grain leather



**10 schwarz / black**



**20 mittelbraun / middle brown**



**23 dunkelbraun / darkbrown**



**26 taupe / taupe**





**40 marine / navy**



**42 jeans / jeans**



**50 grau / grey**



**60 grün / green**

# LINDENMANN

SINCE 1961



**10 schwarz / black**

1000471

P 154

40 mm

85 - 120 cm

Vollrindleder

Full grain leather



**22 cognac / cognac**



**40 marine / navy**



**50 grau / grey**



**10 schwarz / black**

1000379, XL

P 154

40 mm

85 - 150 cm

Vollrindleder

Full grain leather



**22 cognac / cognac**



**23 dunkelbraun / darkbrown**



**40 marine / navy**



**10 schwarz / black**

1000483

P 153

40 mm

85 - 120 cm

Vollrindleder

Full grain leather



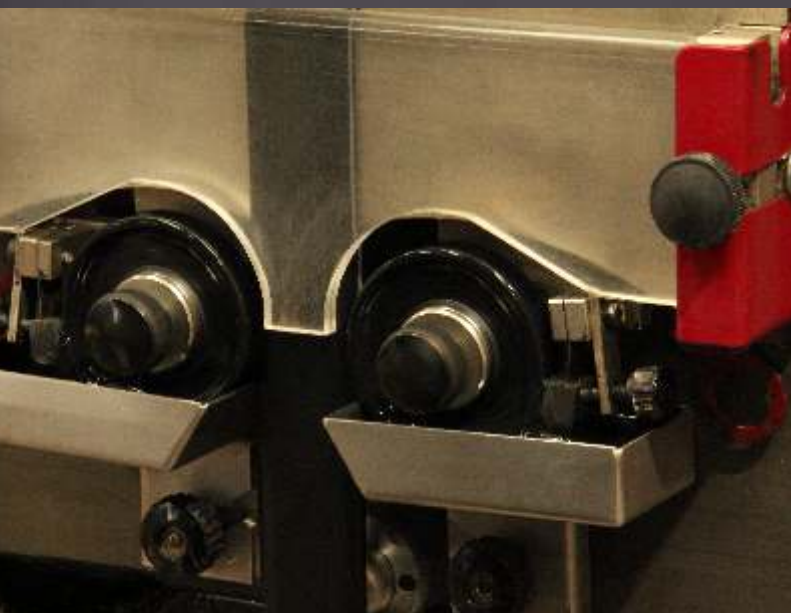
**22 cognac / cognac**



**23 dunkelbraun / darkbrown**



Viel mehr als nur ein paar Gürtel sind durch unsere Hände gegangen; deshalb wissen wir genau, wie sich ein guter Gürtel anfühlt.  
Quite more than just a few belts have passed through our hands; that's why we know exactly how a good belt feels like



Dexterity paired with our skills make the difference: the LINDENMANN leather belt

Fingerfertigkeit gepaart mit unserem Können macht den Unterschied: den LINDENMANN Ledergürtel



1000493

P 153

40 mm

85 - 120 cm

Vollrindleder

Full grain leather

**10 schwarz / black****22 cognac / cognac****23 dunkelbraun / darkbrown**



**10 schwarz / black**

1090079

P 154

40 mm

85 - 120 cm

Vollrindleder

Full grain leather



**22 cognac / cognac**



**23 dunkelbraun / darkbrown**

# LINDENMANN

SINCE 1961



**10 schwarz / black**

1000400, XL

P 155

40 mm

85 - 150 cm

Vollrindleder

Full grain leather



**22 cognac / cognac**



**23 dunkelbraun / darkbrown**



**40 marine / navy**





1000492

P 161

40 mm

85 - 120 cm

Vollrindleder

Full grain leather

**10 schwarz / black**



**20 braun / brown**



**22 cognac / cognac**

# LINDENMANN

SINCE 1961



**10 schwarz / black**

1000481, XL

P 134

40 mm

85 - 170 cm

Vollrindleder

Full grain leather



**22 cognac / cognac**



**23 dunkelbraun / darkbrown**

1000395, XL

P 134

40 mm

85 - 120 cm

Vollrindleder

Full grain leather



**10 schwarz / black**



**20 braun / brown**

1000406, XL

P 134

40 mm

85 - 170 cm

Vollrindleder

Full grain leather



**10 schwarz / black**



**23 dunkelbraun / darkbrown**

1000468, XL

P 161

40 mm

85 - 150 cm

Vollrindleder

Full grain leather



**10 schwarz / black**



**21 braun / brown**

1000266, XL

P 124

40 mm

85 - 150 cm

Echtes Rindleder

Genuine leather



**10 schwarz / black**



**23 dunkelbraun / darkbrown**

LINDENMANN

SINCE 1961

23

**CLASSIC**



# LINDENMANN

SINCE 1961



1005065

P 183

40 mm

85 - 120 cm

Echtes Rindleder

Automatik

Genuine leather

auto lock

**10 schwarz / black**



**20 braun / brown**



**22 cognac / cognac**



1005052

P 165

32 mm

85 - 120 cm

Echtes Rindleder

Automatik

Genuine leather

auto lock



10 schwarz / black

1005001, XL

P 165

32 mm

85 - 130 cm

Echtes Rindleder

Automatik

Genuine leather

auto lock



**10 schwarz / black**



**23 dunkelbraun / darkbrown**



**40 marine / navy**



**10 schwarz / black**

1005075

P 172

32 mm

85 - 120 cm

Echtes Rindleder

Automatik

Genuine leather

auto lock



**20 braun / brown**



**22 cognac / cognac**

1005049

P 172

32 mm

85 - 120 cm

Echtes Rindleder

Automatik

Genuine leather

auto lock



**10 schwarz / black**



**20 braun / brown**



**22 cognac / cognac**



**40 marine / navy**



**51 grau / grey**



**10 schwarz / black**

1005054

P 172

32 mm

85 - 120 cm

Echtes Rindleder  
Automatik  
Genuine leather  
auto lock



**22 cognac / cognac**



**40 marine / navy**

1005078

P 165

32 mm

85 - 120 cm

Echtes Rindleder

Automatik

Genuine leather

auto lock



**10 schwarz / black**

# LINDENMANN

SINCE 1961

1005079

P 153

32 mm

85 - 120 cm

Echtes Rindleder

Automatik

Genuine leather

auto lock



**10 schwarz / black**



**1005080**

**P 153**

**32 mm**

**85 - 120 cm**

**Echtes Rindleder**

**Automatik**

**Genuine leather**

**auto lock**



**10 schwarz / black**

1000496

P 153

36 mm

85 - 120 cm

Echtes Rindleder

Genuine leather

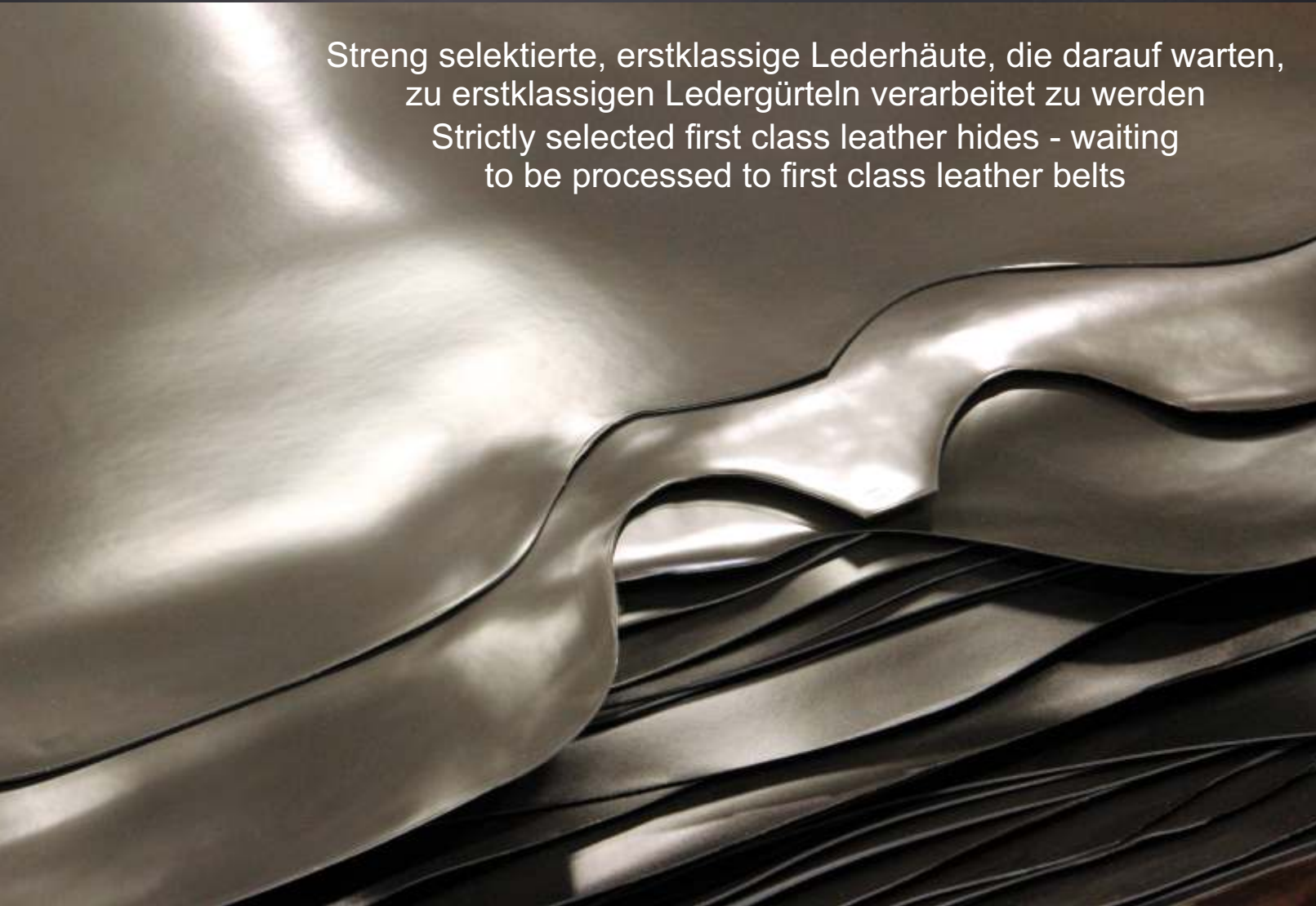


**10 schwarz / black**



**221 cognac / cognac**

Streng selektierte, erstklassige Lederhäute, die darauf warten,  
zu erstklassigen Ledergürteln verarbeitet zu werden  
Strictly selected first class leather hides - waiting  
to be processed to first class leather belts



Traditionell handgefertigt von unseren  
erfahrenen Spezialisten: der Schlüssel  
zu unübertroffener Qualität



Traditionally handcrafted by  
our experienced specialists:  
the key to unrivaled quality

1000319, XL

P 124

30 mm

85 - 150 cm

Echtes Rindleder

Genuine leather



**10 schwarz / black**



**40 marine / navy**



**23 dunkelbraun / darkbrown**



**50 grau / grey**



**22 cognac / cognac**



**21 mogano / mogano**



**70 weiss / white**

1000320, XL

P 161

35 mm

85 - 150 cm

Echtes Rindleder

Genuine leather



**10 schwarz / black**



**22 cognac / cognac**



**21 mogano / mogano**



**23 dunkelbraun / darkbrown**



**40 marine / navy**



**50 grau / grey**



**70 weiss / white**



**10 schwarz / black**

1007511

P 134

30 mm

85 - 120 cm

Echtes Rindleder  
Genuine leather



**22 cognac / cognac**



**23 dunkelbraun / darkbrown**



**40 marine / navy**





1000469  
P 161  
35 mm  
85 - 120 cm  
Echtes Rindleder  
Genuine leather

**10 schwarz / black**



**22 cognac / cognac**



**23 dunkelbraun / darkbrown**

# LINDENMANN

SINCE 1961

1000756

P 134

35 mm

85 - 120 cm

Echtes Rindleder

Genuine leather



**10 schwarz / black**

1000743

P 134

35 mm

85 - 120 cm

Echtes Rindleder

Genuine leather



**10 schwarz / black**

# LINDENMANN

SINCE 1961



**10 schwarz / black**

1000378, XL

P 134

35 mm

85 - 170 cm

Vollrindleder

Full grain leather



**22 cognac / cognac**



**23 dunkelbraun / dark brown**



1000438

P 153

35 mm

85 - 120 cm

Echtes Rindleder

Genuine leather

**10 schwarz / black**



**22 cognac / cognac**



**23 dunkelbraun / darkbrown**

1002244

P 153

35 mm

85 - 120 cm

Echtes Rindleder  
reversibelGenuine leather  
reversible

**06 schwarz-cognac /  
black-cognac**



**07 schwarz-marrone /  
black-marrone**

1002245

P 153

35 mm

85 - 120 cm

Echtes Rindleder  
reversibel

Genuine leather  
reversible



**06 schwarz-cognac /  
black-cognac**



**09 schwarz-marine /  
black-navy**

1002246

P 154

35 mm

85 - 120 cm

Vollrindleder  
reversibel  
Fullgrain leather  
reversible



**08 schwarz-dunkelbraun /  
black-darkbrown**



**09 dunkelblau-cognac /  
navy-cognac**





**21 mittelbraun / medium brown**

1000397, XL

P 153

35 mm

85 - 170 cm

Echtes Rindleder

Genuine leather



**23 dunkelbraun / darkbrown**



**10 schwarz / black**



**221 cognac / cognac**



**40 marine / navy**



**221 dunkelcognac / darkcognac**

1000425, XL  
P 155  
35 mm  
85 - 150 cm  
Vollrindleder  
Fullgrain leather



**22 cognac / cognac**



**10 schwarz / black**



**23 dunkelbraun / darkbrown**



**40 marine / navy**

1520609

P 172

35 mm

85 - 120 cm

Echtes Rindleder  
Genuine leather



**10 schwarz / black**



**22 cognac / cognac**



**20 braun / brown**



**10 schwarz / black**

1000392

P 155

35 mm

85 - 120 cm

Vollrindleder  
Fullgrain leather



**22 cognac / cognac**



**40 marine / navy**



**221 dunkelcognac / darkcognac**



**23 dunkelbraun / darkbrown**



**70 weiss / white**



**10 schwarz / black**

1520623

P 183

35 mm

85 - 120 cm

Vollrindleder

Nubuklederfutter

Full grain leather

Nubuk leather lining



**22 cognac / cognac**



**23 dunkelbraun / darkbrown**



**30 bordeaux / burgundy**



**40 marine / navy**

**10 schwarz / black**

1520587, XL

P 172

35 mm

85 - 150 cm

Echtes Rindleder

Nubuklederfutter

Genuine leather

Nubuk leather lining

**20 braun / brown****22 cognac / cognac****40 marine / navy**  
(120 cm)**30 bordeaux / burgundy**  
(120 cm)



**26 taupe / taupe**  
(120 cm)



**27 stone / stone**  
(120 cm)



**23 dunkelbraun / darkbrown**  
(120 cm)



**51 grau / grey**  
(120 cm)



**60 dunkelgrün / dark green**  
(120 cm)

# SMART







**20 braun / brown**

1520624  
P 172  
35 mm  
85 - 120 cm

Echtes Rindleder  
Genuine leather



**22 cognac / cognac**



**40 marine / navy**



**42 hellblau / light blue**



**51 grau / grey**

# LINDENMANN

SINCE 1961

1000470

P 155

35 mm

85 - 120 cm

Vollrindleder

Full grain leather



**22 cognac / cognac**



**40 marine / navy**



**42 jeans / jeans**



**50 grau / grey**



**60 olive / olive**



**221 dunkelcognac / darkcognac**

# LINDENMANN

SINCE 1961



**22 cognac / cognac**

1007331

P 154

35 mm

85 - 120 cm

Echtes Rindleder

Velours

Genuine leather

Suede



**23 dunkelbraun / darkbrown**



**25 sand / sand**



**26 hellbraun / light brown**



**110 elfenbein / ivory**



**111 taupe / taupe**



**40 marine / navy**



**60 olive / olive**

1000484

P 153

35 mm

85 - 120 cm

Echtes Rindleder

Velours

Genuine leather

Suede



**11 anthrazit / anthracite**



**22 cognac / cognac**



**40 marine / navy**



**50 grau / grey**



**51 hellgrau / light grey**



**60 olive / olive**

# LINDENMANN

SINCE 1961

1000495

P 152

35 mm

85 - 120 cm

Echtes Rindleder

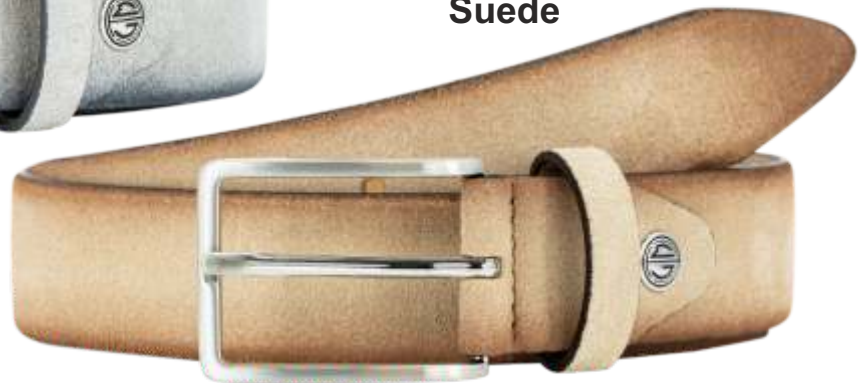
Velours

Genuine leather

Suede



**85 grau / grey**



**129 beige / beige**



**156 braun / brown**



**615 oliv / olive**



**722 blau / blue**



1000482, XL

P 153

35 mm

85 - 150 cm

Vollrindleder

Full grain leather



**10 schwarz / black**



**22 cognac / cognac**



**23 dunkelbraun / darkbrown**



**40 marine / navy**



1007334  
P 165  
40 mm  
85 - 120 cm

Echtes Rindleder  
Velours  
Genuine leather  
Suede

**23 dunkelbraun / darkbrown**



**25 sand / sand**



**26 hellbraun / light brown**



**40 marine / navy**



**110 elfenbein / ivory**



**111 taupe / taupe**

# LINDENMANN

SINCE 1961

1520621, XL

P 165

35 mm

85 - 150 cm

Vollrindleder

Nubuk

Fullgrain leather

Nubuk



**322 cognac-braun / cognac-brown**



**422 cognac-marine / cognac-navy**

1000494

P 153

35 mm

90 / 100 / 110 cm

Stretch-Flechtband  
elastisch, reversibel  
Braided stretch belt  
elastic, reversible



**256 hellbeige-taupe / light beige-taupe**



**470 marine-weiss / navy-white**



**570 grau-weiss / grey-white**



**10 schwarz / black**  
**(XL 130 cm / 140 cm / 150 cm)**

1000102, XL

P 153

32 mm

90 - 150 cm

Stretch-Flechtband  
 elastisch  
 Braided stretch belt  
 elastic



**24 beige / beige**  
**(XL 130 cm / 140 cm / 150 cm)**



**40 marine / navy**  
**(XL 130 cm / 140 cm / 150 cm)**



**70 weiss / white  
(120 cm)**



**900 blau-dunkelblau-weiss / blue-navy-white  
(120 cm)**



**902 d-blau-beige / navy-beige  
(120 cm)**



**913 multicolor / multicolor  
(120 cm)**

**25 sand / sand**

1000488

P 152

35 mm

90 - 120 cm

**Stretch-Flechtband  
elastisch  
Braided stretch belt  
elastic****40 marine / navy****42 hellblau / light blue****50 grau / grey**



1005046

P 154

35 mm

85 - 120 cm

Vollrindleder-Flechtgürtel  
Full grain braided belt



**10 schwarz / black**



**22 cognac / cognac**



**23 dunkelbraun / darkbrown**



## 6080123

P 274  
23 x 8 x 5 cm



softes, antikes Rindleder „CRUNCH“,  
Magnetverschluss, Umhängerriemen mit  
Lederbesatz

soft, antique cow leather „CRUNCH“,  
magnetic lock , handle with leather  
cover



## 6080124

P 394  
34 x 38 x 10 cm



softes, antikes Rindleder „CRUNCH“,  
Umschlag mit doppeltem Magnetverschluss,  
1 Reißverschlussfach innen und außen,  
zusätzliches Einschubfach innen mit Magnet-  
verschluss, Umhängerriemen mit Lederbesatz

soft, antique cow leather „CRUNCH“,  
cover with two magnet fasteners, 1 zipper  
inside and outside, additional compartment  
inside with magnet fastener, handle with  
leather cover



## 6080111

P 274  
23 x 28 x 5 cm



aus mattem antiken Rindleder,  
Magnetverschluss, Umhängerriemen mit  
Lederbesatz

made of dull antique cow leather,  
magnetic lock , handle with leather  
cover





6080125

P 393  
40 x 38 x 10 cm

10  
black

softes, genarbttes Vollrindleder,  
Umhängeriemten, aufwändige  
Innenausstattung

soft, milled full grain cow leather,  
handle, elaborate interior  
equipment



6080126

P 394  
42 x 38 x 10 cm

10  
black

softes, genarbttes Vollrindleder,  
Umhängeriemten, aufwändige  
Innenausstattung

soft, milled full grain cow leather,  
handle, elaborate interior  
equipment



6080127

P 463  
41 x 30 x 10 cm

10  
black

22  
cognac

softes, genarbttes Vollrindleder,  
aufwändige Innenausstattung

soft, milled full grain cow leather,  
elaborate interior equipment





## 6080110

P 464  
38 x 28 x 10 cm



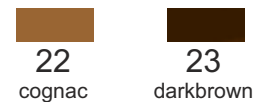
aus mattem antiken Rindleder mit aufwändiger Innenausstattung, Umhängeriemern mit Lederbesatz

made of dull antique cow leather, with elaborate interior, handle with leather cover



## 6080104

P 464  
40 x 32 x 10 cm



aus weichem naturgenarbtm Büffelkalbleder, Umschlag mit doppeltem Clipverschluss, 1 Reißverschlussfach innen und außen, zusätzliches Einschubfach innen mit Magnetverschluss, Tragegurt und Tragegriff aus Büffelkalbleder

made of soft natural milled buff calf leather, cover with two clip fasteners, 1 zipper inside and outside, additional compartment inside with magnet fastener, buff calf leather shoulder strap and handle



## 6080105

P 394  
34 x 38 x 10 cm



aus weichem naturgenarbtm Büffelkalbleder, Umschlag mit doppeltem Magnetverschluss, 1 Reißverschlussfach innen und außen, zusätzliches Einschubfach innen mit Magnetverschluss, Tragegurt und Tragegriff aus Büffelkalbleder

made of soft natural milled buff calf leather, cover with two magnet fasteners, 1 zipper inside and outside, additional compartment inside with magnet fastener, buff calf leather shoulder strap and handle





## 6080100

P 274

34 x 28 x 5 cm



10

black

aus weichem genarbten Vollrindleder, Umschlag mit Magnetverschluss und Reißverschlussicherung, 1 Reißverschlussfach außen und innen, Tragegurt mit Lederbesatz

made of soft milled full grain cow leather, cover with magnetic fastener and zipper protection, 1 zipper outside and inside, handle with leather cover



## 6080101

P 464

40 x 32 x 10 cm



10

black

aus weichem genarbten Vollrindleder, Umschlag mit Magnetverschluss, 2 Reißverschlussfächer außen, 1 Reißverschlussfach innen, Tragegurt mit Lederbesatz

made of soft milled full grain cow leather, cover with magnet fastener, 2 zippers outside, 1 zipper inside, handle with leather cover





## 6090016

P 153  
100 x 75 mm

	
10 black	20 brown

soft cow leather wallet  
5 x departments / credit card  
1 x coin department  
1 x banknote department



data protection



## 6090013

P 153  
110 x 90 mm

		
10 black	20 brown	22 cognac

soft cow leather wallet  
11 x departments / credit card  
1 x coin department  
2 x banknote departments  
1 x zipper department



data protection



## 6090017

P 153  
95 x 120 mm

	
10 black	20 brown

soft cow leather wallet  
11 x departments / credit card  
1 x coin department  
2 x banknote departments



data protection





## 6090015

P 153  
95 x 110 mm

		
10 black	20 brown	22 cognac

soft cow leather wallet  
9 x departments / credit card  
1 x coin department  
2 x banknote departments  
1 x zipper department



data protection



## 6090014

P 153  
120 x 95 mm

		
10 black	20 brown	22 cognac

soft cow leather wallet  
11 x departments / credit card  
1 x coin department  
2 x banknote departments



data protection



## 6090011

P 153  
120 x 95 mm

		
10 black	20 brown	22 cognac

soft cow leather wallet  
13 x departments / credit card  
1 x coin department  
2 x banknote departments



data protection



# LINDENMANN

SINCE 1961

bank note safe department  
with zipper



6090018

P 153  
120 x 95 mm

10  
black

soft cow leather wallet  
11 x departments / credit card  
1 x coin department  
2 x banknote departments  
1 x banknote department with zipper



data protection

bank note safe department  
with leather cover



6090019

P 153  
120 x 95 mm

10  
black

soft cow leather wallet  
11 x departments / credit card  
1 x coin department  
2 x banknote departments  
1 x banknote department with cover



data protection



6090020

P 153  
95 x 110 mm

10 black      22 cognac      23 brown

soft cow leather wallet with colour effect  
9 x departments / credit card  
1 x coin department  
2 x banknote departments  
1 x zipper department



data protection





## 6090021

P 153  
95 x 120 mm



10  
black



22  
cognac



23  
brown

soft cow leather wallet with colour effect  
14 x departments / credit card  
1 x coin department  
2 x banknote departments  
1 x zipper department



data protection



## 6090022

P 153  
120 x 95 mm



10  
black



22  
cognac



23  
brown

soft cow leather wallet with colour effect  
13 x departments / credit card  
1 x coin department  
2 x banknote departments



data protection



## 6090023

P 153  
110 x 85 mm



10  
black



22  
cognac



23  
brown

soft cow leather wallet with colour effect  
9 x departments / credit card  
1 x zipper department  
2 x banknote departments  
1 x banknote clip (removable)



data protection





## 6090024

P 153  
120 x 95 mm

10  
black

soft cow leather wallet  
6 x departments / credit card  
1 x coin department  
1 x banknote departments  
1 x banknote safe department with zipper



data protection



## 6090025

P 153  
85 x 115 mm

10  
black

soft cow leather credit card case  
with ornament embossing  
16 x departments / credit card  
2 x banknote departments



data protection



## 6090026

P 153  
120 x 95 mm

10  
black

soft cow leather wallet  
with ornament embossing  
1 x coin departments  
11 x departments / credit card  
2 x banknote departments



data protection





## 6090027

P 153  
110 x 90 mm

  
**10**  
black

soft cow leather wallet  
with ornament embossing  
11 x departments / credit card  
1 x coin department  
2 x banknote departments  
1 x zipper department



data protection



## 6090028

P 153  
95 x 120 mm

  
**10**  
black

  
**20**  
brown

soft cow leather wallet  
with natural grain  
11 x departments / credit card  
1 x coin department  
2 x banknote departments



data protection



## 6090029

P 153  
120 x 95 mm

  
**10**  
black

  
**20**  
brown

soft cow leather wallet  
with natural grain  
9 x departments / credit card  
1 x zipper department  
2 x banknote departments



data protection



# LINDENMANN

SINCE 1961



## 6090038

P 165  
110 x 90 mm

- |   |   |
|---|---|
|  |  |
| 10  | 20  |
| black   | brown   |

soft italian cow leather wallet  
with natural grain  
11 x departments / credit card  
1 x coin department  
1 x banknote clip



data protection



## 6090037

P 165  
80 x 110 mm

- |   |   |
|---|---|
|  |  |
| 10  | 20  |
| black   | brown   |

soft italian cow leather card wallet  
with natural grain  
14 x departments / credit card  
2 x banknote departments



data protection



## 6090036

P 165  
110 x 90 mm

- |   |   |
|---|---|
|  |  |
| 10  | 20  |
| black   | brown   |

soft italian cow leather wallet  
with natural grain  
11 x departments / credit card  
1 x coin department  
2 x banknote departments



data protection





6090030

P 134

110 x 85 mm



data protection

10  
black

soft cow leather wallet  
with ornament embossing  
6 x departments / credit card  
1 x coin department  
1 x zipper department  
1 x key ring



29

cognac-gelb  
cognac-yellow



6090031

P 10

110 x 90 mm



data protection

10  
black

soft cow leather credit card case  
with ornament embossing  
6 x departments / credit card



36

rot-grün  
red-green



43

blau-rot  
blue-red

64  
grün-blau  
green-blue

43  
blau-rot  
blue-red

29  
cognac-gelb  
cognac-yellow

36  
rot-grün  
red-green

64  
grün-blau  
green-blue

6090034

P 10

105 x 68 mm

soft cow leather credit card case  
5 x departments / credit card



6090033

P 10

98 x 65 mm

soft cow leather credit card - receipt case  
3 x departments / credit card - receipts



data protection



29  
cognac-gelb  
cognac-yellow



29  
cognac-gelb  
cognac-yellow



36  
rot-grün  
red-green



36  
rot-grün  
red-green



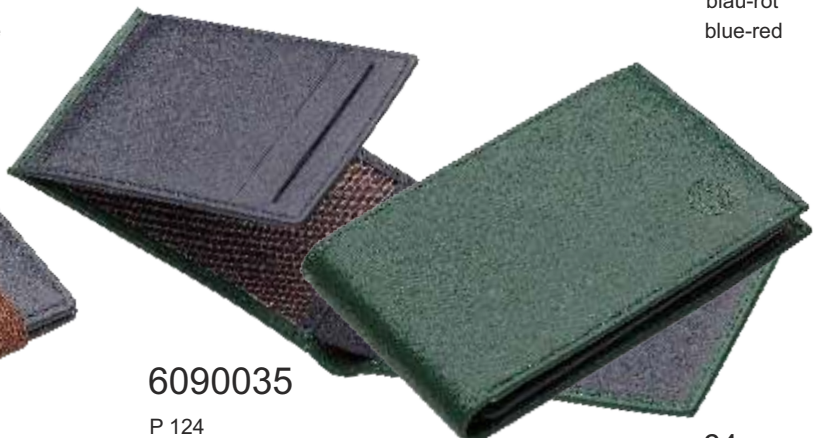
64  
grün-blau  
green-blue



43  
blau-rot  
blue-red



42  
blau-cognac  
blue-cognac



64  
grün-blau  
green-blue

6090032

P 134  
75 x 98 mm  
soft cow leather credit card case  
10 x departments / credit card

6090035

P 124  
105 x 68 mm  
soft cow leather credit card case  
6 x departments / credit card



data protection



data protection

# LINDENMANN

SINCE 1961



Stefan Conle  
Verkaufsleiter  
Sales Manager



Matthias Lindenmann  
Die nächste Generation  
The next generation

LINDENMANN, Firmensitz und Produktionsstätte in Pforzheim / Deutschland



Heute ist LINDENMANN ein international tätiges, weltweit für seine nachhaltigen, umweltfreundlichen, hochwertigen und langlebigen Produkte geschätztes Familien-Unternehmen. Für die Produktion verwenden wir Leder von ausgewählten und nach dem LWG Standard zertifizierten Gerbereien und exklusiven, langjährigen Partnern und fertigen unsere Ledergürtel in unseren eigenen Werken in Pforzheim und Spanien.

Today, LINDENMANN is an internationally active, family-run company, recognised worldwide for its sustainable, environmentally friendly, high-quality and durable products. For the production we use leather from selected tanneries and exclusive partners certified to the LWG standard and manufacture our leather belts in our own factories in Pforzheim and Spain.



# LINDENMANN

SINCE 1961



## GERMANY

LINDENMANN GmbH & Co. KG  
Lochaeckerstrasse 13  
75177 Pforzheim  
Baden-Württemberg  
+49 7231 1399690 / +49 7231 13996999

[info@lindenmann.com](mailto:info@lindenmann.com)  
[www.lindenmann.com](http://www.lindenmann.com)

## ESPAÑA

KARL HEINZ LINDENMANN ESPAÑA S.L.  
Músico Gonzalo Blanes, 5  
Alcoy  
Alicante / CP 03801  
+34 965510110 / +34 96 5510250

[info@lindenmann.es](mailto:info@lindenmann.es)  
[www.lindenmann.es](http://www.lindenmann.es)